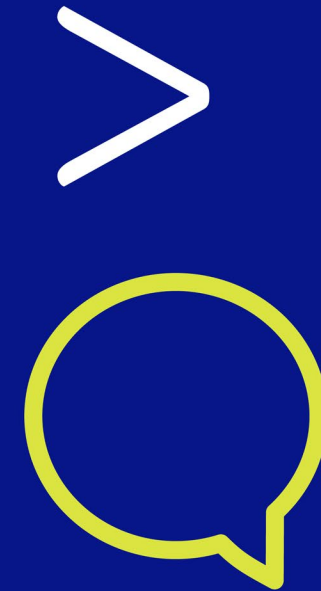


ADVISER 2024-25 Updates

9/11/2024

Max Reiner

max.reiner@nebraska.gov



Collection Calendars

- 2024-2025 ADVISER Calendar [available here](#)
- 2023-2024 ADVISER Follow Up Collection due 9/15/2024, audit window closes 10/2/2024
- 2024-2025 Staff Reporting due 9/15/2024, audit window closes 10/31/2024
- 2024-2025 ADVISER Fall Collection due 10/15/2024, audit window closes 10/31/2024
 - All ADVISER vendors [have been approved](#) for syncing 24-25 data
- ADVISER Fall work days are happening now, [see schedule here](#)



ADVISER Follow Up Collection Data

- Follow up now only includes Enrollment records (tracking summer graduates, dropouts, 205s, etc.) and Summer Semester course sections/grades
- Year end attendance & ADA/ADM data is in use and generally will no longer be updated
 - NDE generally is not expecting districts to fix every issue found in district attendance audits, please make fixes for the upcoming year though



Summer Grads Data & SPED

- The office of Special Education wants to accurately report SPED data to the federal OSEP that requests data as of 6/30, which is the main reason SPED programs are no longer in the follow up collection
- But – NE statute allows any student who graduates before the first day of school to be counted in the prior year's graduation data
 - Enrollment data *is* included in the follow up – but how do we deal with the exit reason for these SPED students needing to be updated to match the enrollment?



Summer Grads Data & SPED

- Our solution going forward – after June 30th, schools may submit a formal Request to Submit Data Late or Make Data Changes in order to update SPED exit data for any SPED students who have received a diploma over the summer (before the first day of the following school year) and whose SPED exit reason needs to be changed compared to what was reported on June 30th within the locked data in ADVISER
- NDE will process these requests around late September this year, but should be able to do it as soon as request is submitted in the future
- The only data elements that should be updated via these requests are existing SPED programs' exit dates and exit reasons



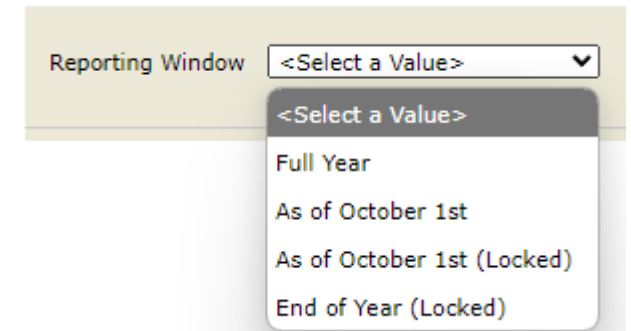
Summer Grads Data & SPED

- SPED exit dates reported after June 30th WILL NOT change the data submitted federally (to OSEP) for the year that just ended
 - Example: A SPED exit change requested now during the 23-24 follow up collection will be reported in OSEP's SPED Exited file in the 24-25 school year instead of the upcoming 23-24 file
- Enrollment exit dates reported after June 30th WILL change the cohort grad rate data submitted to the federal DoE and shown on the upcoming NEP release for the year that just ended
 - Example: A graduation exit reported during the 23-24 follow up collection will be reported in federal cohort grad rate file in 23-24
 - Example: A graduation exit reported during the 23-24 follow up collection will be reported in the 2024 cohort grad rates shown on the 2024 NEP in November 2024
 - Example: A graduation exit reported during the 23-24 follow up collection will be used for AQuESTT graduation rate metrics in Fall 2025 (AQuESTT always lags this metric by a year)



Summer Grads Data & SPED

- Pending the late request approval, the ADVISER “End of Year (Locked)” data reports will be updated utilizing the revised SPED and enrollment exit information
- NDE will soon add a new Reporting Window option that will be unique for the SPED Exited report – “End of Year (Locked Federal Report)” which will allow districts to see a copy of the data as it was on 6/30
- Special Education office’s [SOS update](#)



Staff Reporting Changes

- The only update for 24-25 - reporting Coaches in Staff Reporting is now optional, due to changes in NSAA Bylaws:
 - *2.12.2 – Coaches and Sponsors. School districts may choose to hire their own external coaches and employ those individuals who do not possess a Nebraska Teacher Certificate or Nebraska Administrative and Supervisory Certificate.*
- If Districts do report Coaches in Staff Reporting, NDE will still run certification checks against them



Staff Reporting Changes

- New error in NSSRS Validation: **593 No Teacher FTE Reported at School With Students In Membership**
 - *There are no teachers (position codes 1150 through 1180) reported as assigned to a school that reports students in Membership. Please move part or all of your teacher assignments' FTE to the correct location in Staff Reporting for those staff who are teaching classes at the listed school.*
- This error will begin running after NDE has created Membership counts for the new year (likely November) with staff data needing to be corrected by 6/30
- This was added to help with a data validation that occurs when NDE submits staff data to federal DoE



ADVISER 2024-2025 Changes

- All yearly updates are documented in Appendix A of the new [ADVISER Data Elements](#) document, not much has changed from what was shared at April's data conference session
- The 200 Exit Withdraw Code has been renamed to “Intra-District Transfer or Enrollment Change”
 - Besides an intra-district transfer, this code can also be used to indicate a change in enrollment data (residency status, FTE, resident district, calendar) without a transfer, where a record is end dated and a new enrollment record is submitted with the modified data effective the following school day



ADVISER 2024-2025 Changes

- New field collected in English Learner programs: “Dismissed Via IEP Review”
- Used when a special education English learner student is removed from having to participate in EL programs & assessments as part of their IEP review process
- Similar to the students flagged as “Redesignated English Fluent” except that flag should be used only for students who no longer participate due to testing as fluent in the ELPA



ADVISER 2024-2025 Changes

- New flag that can be set on students “Met State Graduation Requirements” aka the FAFSA requirement
- This is meant to be reported on graduates starting this year
- This flag can be set on students regardless of whether districts have confirmed they applied for FAFSA or the district has waived the requirement for that student
 - NDE is purposefully avoiding collecting the data about whether an individual student applied or was waived, hence the “met requirements” terminology
 - The SIS vendor may add multiple flags though so that districts can keep track of either option
- There will be an aggregate data collection created later this year for districts to report the total number of waived vs. FAFSA students



ADVISER 2024-2025 Changes

- Other changes noted in Appendix A:
 - Made note of the change that was introduced halfway through last school year that allows districts to count a course towards their instructional unit totals if it has a valid teacher but no students enrolled
 - NDE will again be collecting the specific school where a Rule 18 Interim Program student is enrolled
 - SIS vendors have added various methods to input these
 - Made note that we will continue to use the SPED program's Alternate Assessment flag to determine if an EL student should be taking the ELPA vs. ELPA Alt assessment



ADVISER 2024-2025 New Validations

- There are a batch of new errors/warnings that NDE will announce and activate within the next week:
- Error 803 - Student Reported as Graduated Is Not Reported As Having Met State Graduation Requirements
 - Will trigger for any students with a 210 or 211 graduate exit code
- Error 804 - Rule 18 Interim Program Record Reported Without Indicating Rule 18 School Location
- Error 805 - English Learner Student Reported as "Dismissed Via IEP Review" Does Not Have a Special Education Program



ADVISER 2024-2025 New Validations

- Warning 206 - Suspension/Expulsion Reported for Student Before Grade 03
 - Reflects a new state statute adopted last year that says this is only allowed when involving deadly weapons
- Error 807 - Special Education Student Exiting With School Enrollment Record "Withdrawal From Mandatory Attendance" Needs Valid Special Education Exit Record
 - Similar to several other errors that match enrollement exit withdraw codes against SPED exit reasons



ADVISER 2024-2025 New Validations

- Error 808 - Student Title I Part A Program Reported With Invalid Participation Type
 - To enforce that vendors are only sending up these options

CODE/DESCRIPTION
Private school students participating
Public Targeted Assistance Program

- Error 809 - Retired NDE Staff ID Used In a Course Section



ADVISER 2024-2025 New Validations

- Info 810 - Student Reported as "Not Enrolled Eligible to Return" In Prior Year Has An Enrollment In The Current School Year
 - "Information" is the lowest level below even "Warning" and can be hidden – it doesn't necessarily reflect that the data is wrong it is just an additional tool to help districts check if their students with 205s from last year need to be reviewed
- Error 811 - Student With an Exit Withdraw Type of 212 "Completer No Diploma" Without a Special Education Program Record
 - This exit withdraw code was always meant to only be used for SPED students receiving a certificate/etc. rather than diploma upon exiting



ADVISER Person ID Updates Coming Fall 2024

- NDE has a batch of bug fixes and additions to ADVISER Person ID waiting to be deployed
 - Will likely wait until the busy season has died down before releasing later this Fall
 - Updated and extended user instructions document will be released at the same time
 - Will be releasing an updated file template as well, as NDE will be adding an optional Preferred Middle Name field
 - Just like when NDE added preferred first and last names, files uploaded without these columns as well as files with the new fields set to blank will be accepted



Modernized NDE Portal Coming Winter 2024

- Anticipated Rollout - Early December 2024
 - Single Sign-On option tied to district's local accounts (also used by ESUCC)
 - No more “activation codes”
- Look out for upcoming bulletins for more info, including
 - Training Videos
 - Webinars
 - Instruction Documents



Questions?

- Please use the Zoom Q&A window

Thank you for watching



Resources & Data Conference

- [ADVISED Resources](#)
- Fall Workdays [website](#)
- Fall Workday [videos playlist](#)
 - [New data stewards](#) presentation video
 - [2024-2025 Staff Reporting](#) presentation video
- 2024 data conference [videos archive](#)
 - Today's slides & video will be posted on the [2024 archive](#) as well
- 2025 data conference – April 8 & 9, 2025
 - <https://nedataconference.com/>



Pre-Recorded Session – Art Course Codes

- Update on NDE's Art course codes and an update about NE's participation in the Arts Education Data Project
 - [Session video](#) – 14 minutes
- Slides and more files can be found at the NDE [Fine Arts website](#)
- Cody Talarico, Arts Education Specialist
 - Cody.Talarico@nebraska.gov

