

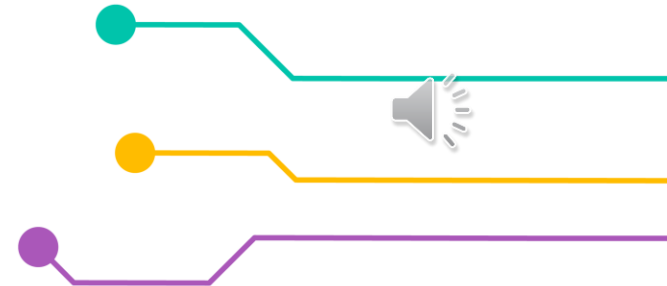
CULTIVATING STUDENTS' POTENTIAL

with Data Advancements



Teaching Strategies Gold

- Carol Burk, Early Childhood education Specialist
- Emly Daberkow, Early Childhood education Specialist
- Kelly Jones, Early Childhood education Specialist





What is Teaching Strategies Gold? (Gold)

Gold is an assessment tool

- Formative assessment is embedded in the curriculum planning process.
- Involves the ongoing collection of information through observation and documentation.
- Links documented moments of learning and research-based progressions of knowledge and skill development.
- Data recorded on children's learning leads to the planning of experiences, environments, and activities that further children's learning.





What does Gold look like in the classroom?

- It is not a curriculum; it is an **assessment tool** that is based on child observation.
- It is meant to connect with a play-based curriculum.
- Play-based curriculums provide an optimal opportunity
 - Observe child learning
 - Measure development
 - Acquire data





Child Outcomes

The purpose of measuring child outcomes:

- Ensure that young children are active and successful participants during the early childhood years and in the future across all settings.
- The requirements for child data collection and online reporting using My Teaching Strategies GOLD™ are intended for use by teachers, practitioners, and program administrators who are responsible for measuring and reporting child progress.
- Ongoing data collection and reporting requirements apply to all children birth to kindergarten entrance enrolled in district or ESU early childhood programs and services.



Who is responsible for managing and verifying child outcome data?

- The district-designated GOLD online administrator is responsible for overseeing all data entry, reporting, and information updates for the district or ESU.
- The district's GOLD online administrator(s) is the official contact for all the NDE communication for GOLD.
- In a partnership program, there must be an online administrator for the district and an online administrator for the EHS/HS.
 - At the beginning of the year, there needs to be an agreement between the district and EHS/HS GOLD administrators regarding the level of access each user receives, team member access, and funding source administrator access.





Important Reporting Fields

- Demographic information
 - Name
 - Birthdate
- ADVISER ID/NSSRS #
- Student ID/Identifier
- Funding Source





Navigating Demographic Information

The screenshot shows a web browser window with the URL <https://my.teachingstrategies.com/children/view/?new/>. The page contains a form for adding a child to a class. On the left side, there is a sidebar with two buttons: "Add Child" and "Request OSEP Exit". The main form is divided into three sections:

- Select Class:** A dropdown menu labeled "Class".
- Class Details:** A dropdown menu labeled "Age or Class/Grade*", a text input field for "First Day in Program*" with a date format "MM/DD/YYYY" below it, and a mouse cursor pointing at the field.
- Child Details:** A series of input fields and dropdown menus: "First Name*", "Middle Initial", "Last Name*", "Nickname", "Identifier", "Gender*", "Birth Date*" with a date format "MM/DD/YYYY" below it, "Primary Language*", "Ethnicity*", "Race*", "Student ID#", "Child Profile picture" (with a person icon and an "Edit" button), and "ADVISER ID / NSSRS#".



Accurate Data

Why is it important to make sure that the fields are put in accurately, complete and updated?

- To cross reference TSG and ADVISER
- Longitudinal data- child outcomes
 - Gold *is* the child outcome data/it is the required assessment for District operated PK programs.
- Teachers/coordinators input information.
 - It is helpful to make sure the required ID's are available.



“Cleaning Up” the Data

- School districts are the stewards of their Gold accounts.
- Having accurate data is important.
- Please ensure your district is doing the following:
 - Archive students that are no longer in the program. (Do not delete!)
 - Delete teachers/administrators who are no longer with the district.
 - Submit a transfer request, if a student already has a profile in a different district. (This form can be found on the Office of Early Childhood section of NE Dept of Education website.)



What Gold Data Can be used for

- Gold data is the assessment data gathered about students before they enter elementary school.
- Kindergarten transition.
- Share with educational teams.
- Share with parents.



Helpful Resources

- Nebraska Specific Gold questions use tsgold@nebraskacloud.org
- TS Gold Support Portal:
 - myteachingstrategies.com
- Early Childhood Education specialist's at NDE
 - Carol.burk@nebraska.gov
 - Emly.Daberkow@nebraska.gov
 - Kelly.jones@nebraska.gov

Results Matter Website

